



650 SH Business 121 Lewisville, TX

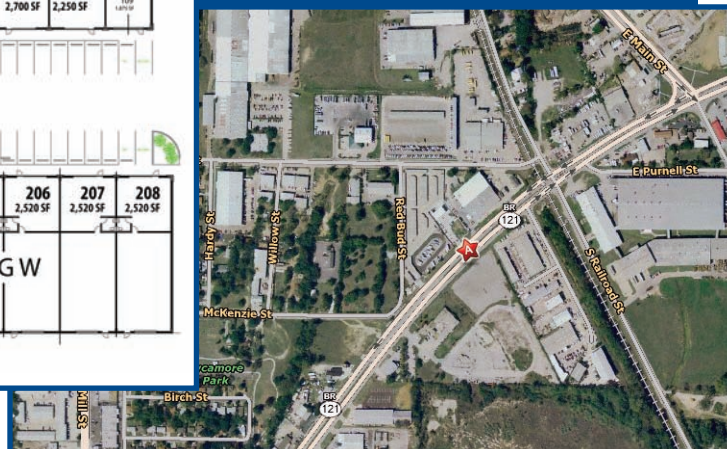
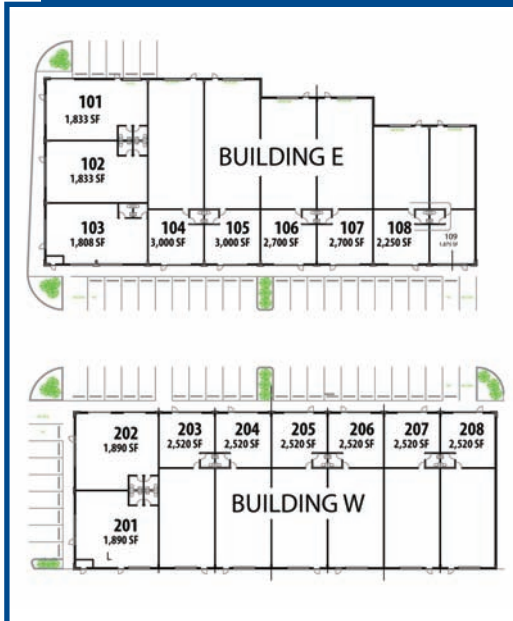


Zander Place Phase I

*Business SH 121 carries
60,000 cars per day*

Immediate Availability
Zoned Light Industrial
Rents are Modified Gross

Water, Sewer, Common Area
Maintenance, Building Insurance,
Building Property Taxes
all included.



Zander Place Phase I

650 SH Business 121, Lewisville, TX

WEAVER

COMMERCIAL REAL ESTATE

for more information contact:

Todd Weaver
2901 Corporate Circle
Flower Mound, TX 75028

todd@weavercommercial.com
469-635-2833 Office
469-635-2849 Fax

This information is believed to be accurate, but no representation or warranty, express or implied, as to its accuracy or completeness is made by Weaver Commercial Real Estate, Ltd. and/or its agents or any party. The presentation of this property is submitted subject to errors, omissions, change of price and prior sale or lease, or withdrawal from market without notice.