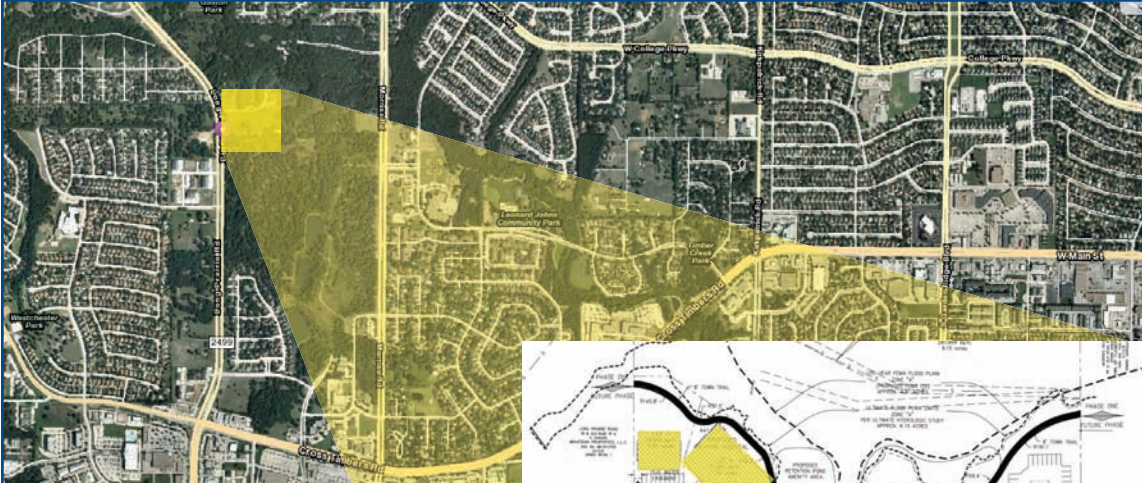




Pad Sites for Sale

Located on 2499 adjacent to Presbyterian Hospital and the Riverwalk



22 Acre Medical Park located directly adjacent to Presbyterian Hospital in Flower Mound, TX.

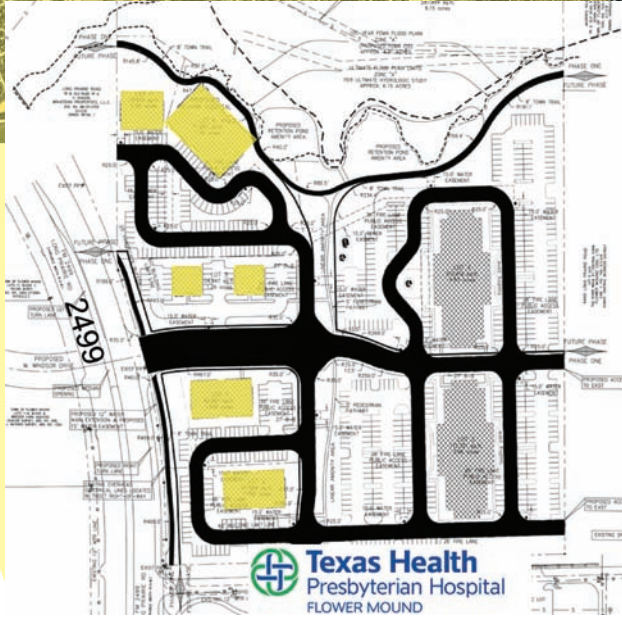
Pad Sites for:

- Restaurants with Outside Dining
- Medical Rehabilitation Hospital
- Medical
- Professional Office Buildings
- General Retail

Pad sites will be platted, zoned and have access drives poured.

5 Acre Park on site with Connecting Trails and Multiple Ponds and Water Features

Featured Parkway Entrance from FM 2499 (Long Prairie Rd) - Controlled Traffic Signal for Convenient Patient Ingress and Egress.



Timber Creek Medical Park

Flower Mound, TX 75028



for more information contact:

Todd Weaver
3505 Yucca Drive, Suite 100
Flower Mound, Texas 75028

todd@weavercommercial.com
469-635-2833 Office
469-635-2849 Fax