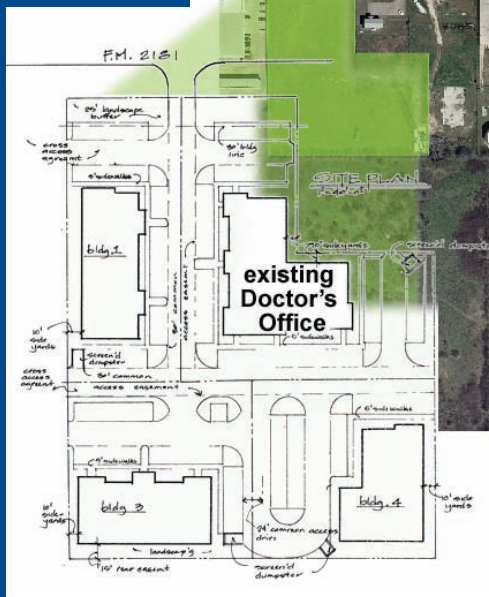
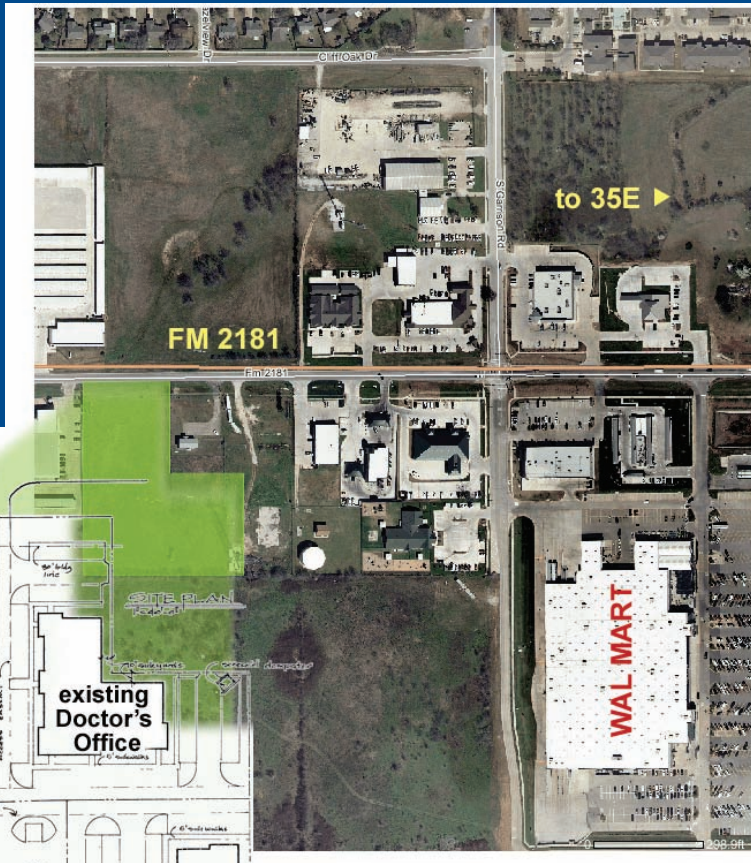




FM 2181 Swisher Rd.



3 lots of 36,000 sq. ft. +/-
perfect for office retail or
medical uses.

Located on 2181 (Swisher Rd). These 3 tracts are located near several retail developments. These platted tracts offer sewer and water with access drives poured and in place. Compared with surrounding tracts, these offer the best deal possible.

- Located in a fast growing area of Denton County not in a municipality.
- Development costs are minimal due to no municipality.
- Excellent retail and office exposure on 2181 located just west of Kensington Square and new Wal-Mart.
- All utilities and access drives are in the ground and to all 3 sites.
- Three 36,000 sq ft. Commercial Lots
- FM 2181 is planned to grow to a 6 lane road soon.

WEAVER
COMMERCIAL REAL ESTATE

for more information contact:

Todd Weaver
2901 Corporate Circle
Flower Mound, TX 75028

todd@weavercommercial.com
469-635-2833 Office
469-635-2849 Fax