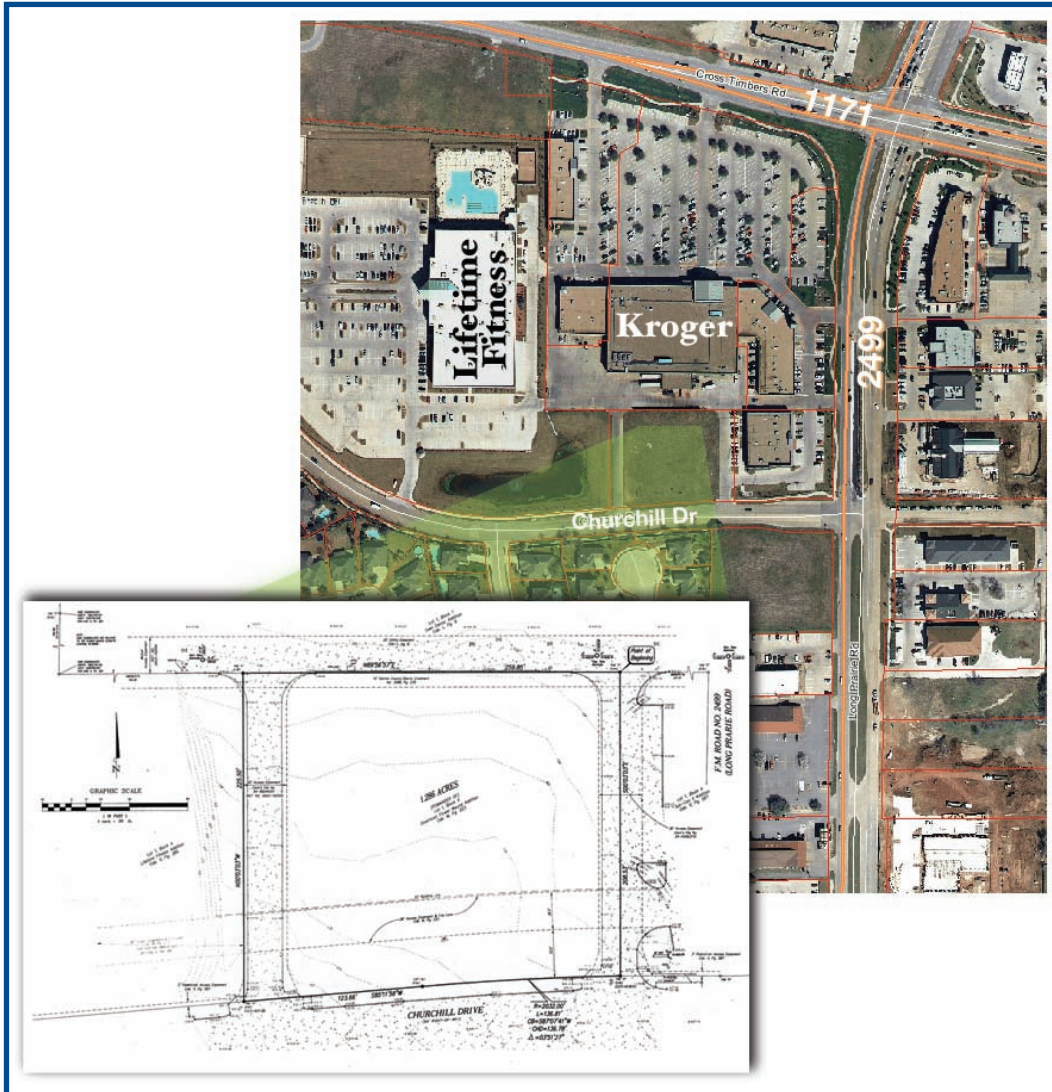




# Churchhill Drive & FM 2499 Town Center



**This is the last tract left in Town Center** and measures 1.28 acres. Agreements in place allow for no encumbrance of a detention facility. This tract is located next to Life Time Fitness with visibility of the signalized intersection of 2499 and Churchill Drive.

- Excellent retail and office exposure between 1171 and 3040 in Flower Mound
- Located in a fast growing area of Denton County
- Signalized Intersection on FM 2499 and Churchill Dr in Central Flower Mound.
- Master Planned for Retail and Office use.

**WEAVER**  
COMMERCIAL REAL ESTATE

for more information contact:

**Todd Weaver**  
2901 Corporate Circle  
Flower Mound, TX 75028

todd@weavercommercial.com  
469-635-2833 Office  
469-635-2849 Fax