

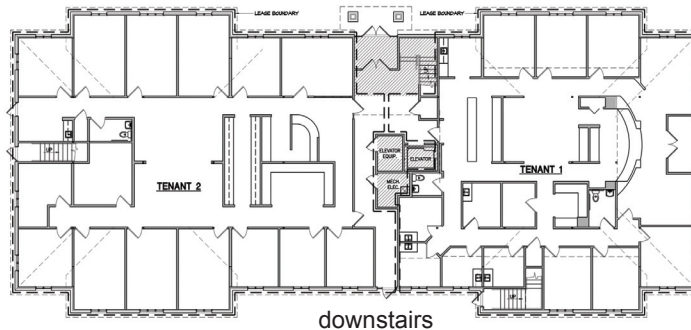


Office / Medical

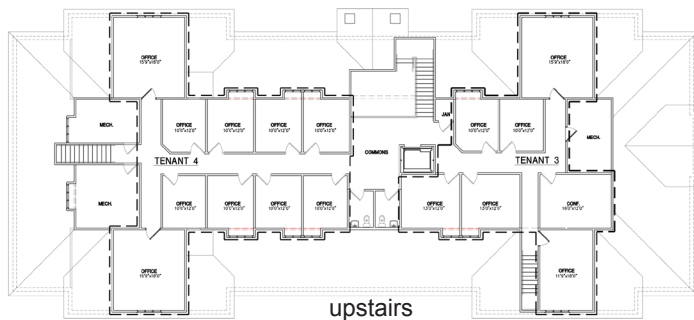
Two story office building "to be built"
9240 sq. ft. available downstairs and 3720 upstairs



\$14.50 per sq. ft. plus
operating expenses
initially estimated at
\$5.50 per sq. ft.



downstairs



upstairs



WEAVER
COMMERCIAL REAL ESTATE

for more information contact:

Todd Weaver
3505 Yucca Drive, Suite 100
Flower Mound, Texas 75028

todd@weavercommercial.com
469-635-2833 Office
469-635-2849 Fax

74 McMakin Rd
Bartonville, TX 76226