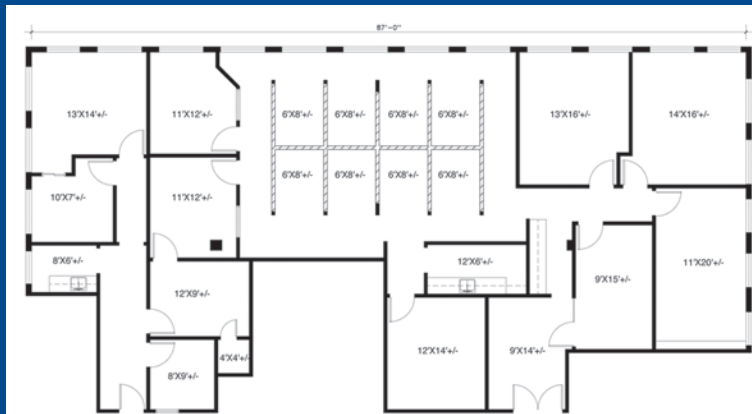




3624 Long Prairie Rd



2nd Floor Plan - 3224 SF

Office Suite ideally located in Flower Mound, with instant accessibility to the entire Metroplex. These Office Suites are surrounded by a variety of major tenants to include restaurant, banking, grocery and retail.

- Great signage
- Within walking distance to banks restaurants and other retail.
- Suite 201
- 3,224 sq. ft. + -
- \$17/foot
- plus \$6.00 NNN

3624 Long Prairie Rd Flower Mound



for more information contact:

Todd Weaver
2901 Corporate Circle
Flower Mound, TX 75028

todd@weavercommercial.com
469-635-2833 Office
469-635-2849 Fax