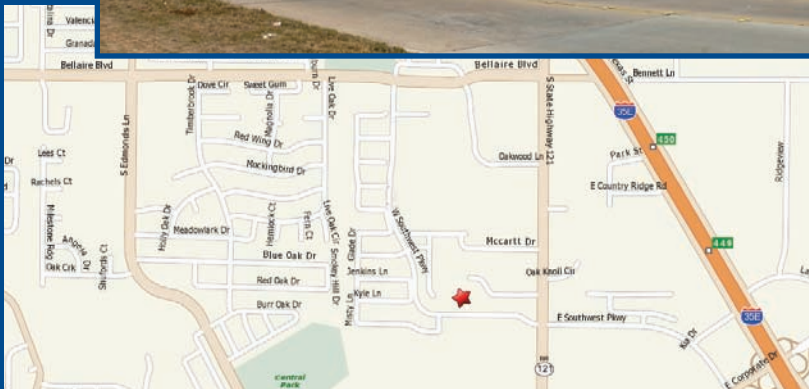
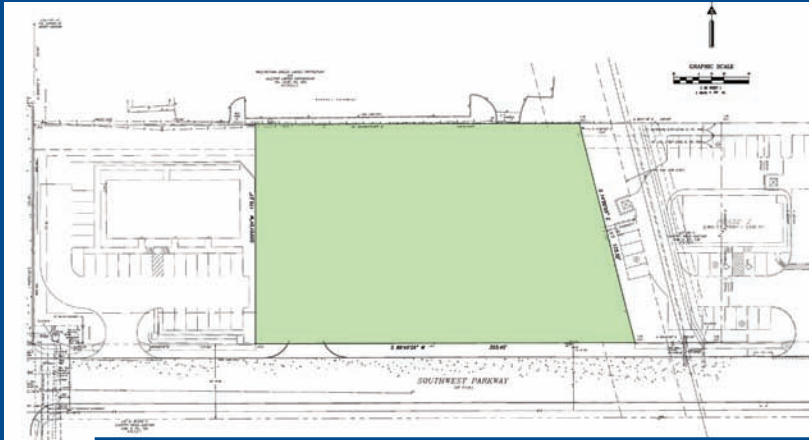




## 1.130 ACRE FOR SALE



Zoned Light Commercial which includes several uses like office.

Great access to Hwy 121 & Hwy 135 E.

The tract lays out wider than deep so excellent shape for maximizing any development.

Public and Franchise utilities are to the tract.

# 285 Southwest Pkwy Lewisville



### for more information contact:

Todd Weaver  
2901 Corporate Circle  
Flower Mound, TX 75028

todd@weavercommercial.com  
469-635-2833 Office  
469-635-2849 Fax