



## 285 Southwest Pkwy

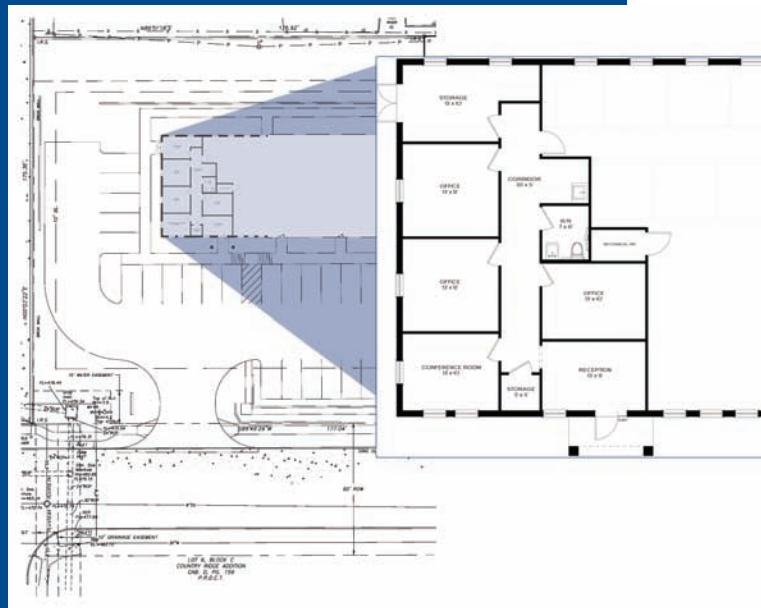


### OFFICE SPACE FOR LEASE

This office space is completely finished out and move in ready!

The layout is excellent for any type of user.

Highway 35E, 121 Bypass and FM 3040 are close for easy access anywhere in the metroplex.



- 1,250 sq. ft. comprised of four offices
- Conference room
- Reception area
- Private bathroom
- Two separate entrances.

**285 Southwest Pkwy**  
Lewisville



#### for more information contact:

Todd Weaver  
2901 Corporate Circle  
Flower Mound, TX 75028

todd@weavercommercial.com  
469-635-2833 Office  
469-635-2849 Fax