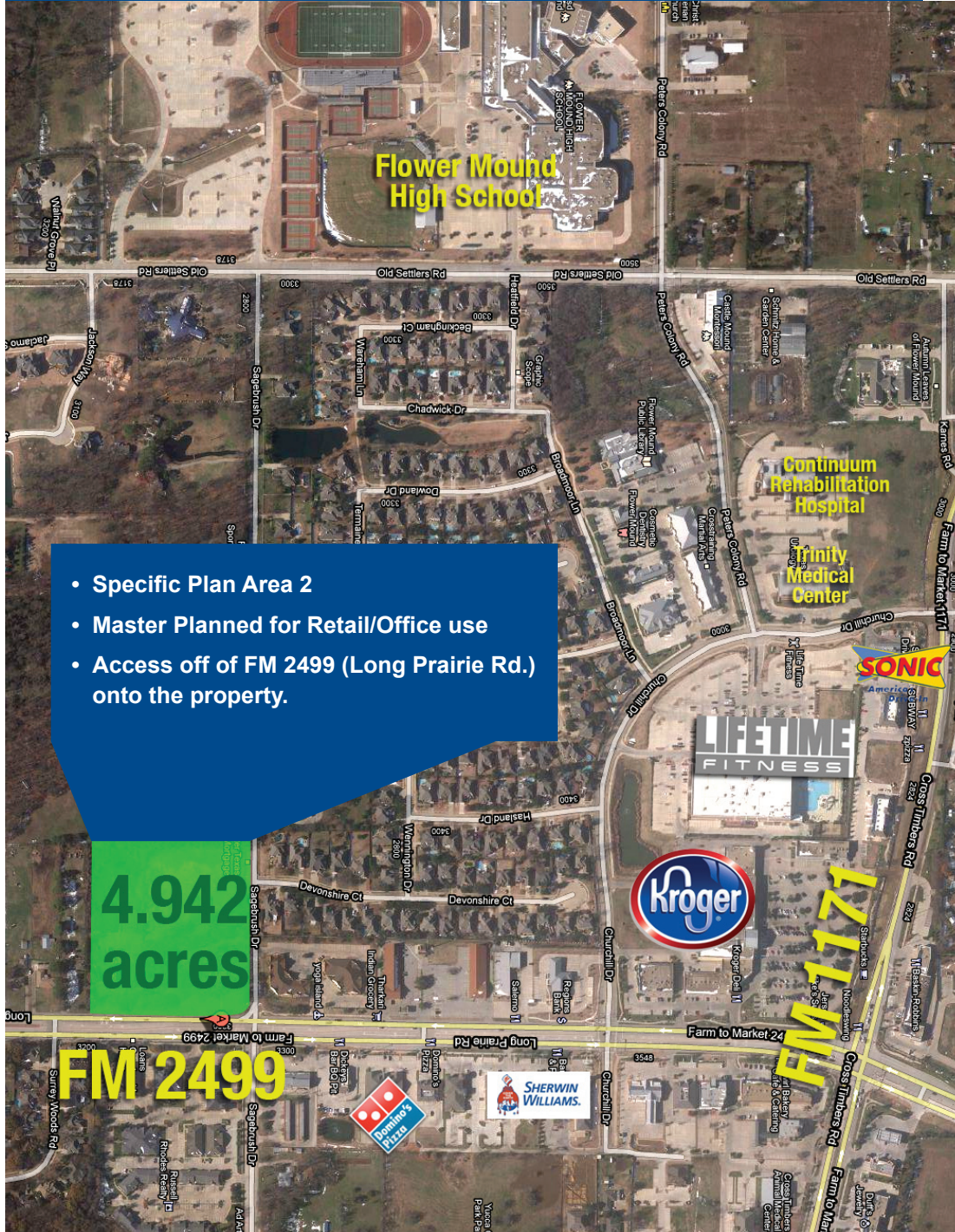




LAND FOR SALE

4.942 acres of land at the southwest corner of FM 2499 (Long Prairie Rd.) & Sagebrush Drive

2499 and Sagebrush Flower Mound



- Specific Plan Area 2
- Master Planned for Retail/Office use
- Access off of FM 2499 (Long Prairie Rd.) onto the property.

4.942 acres

FM 2499



for more information contact:

Todd Weaver
2901 Corporate Circle
Flower Mound, TX 75028

todd@weavercommercial.com
469-635-2833 Office
469-635-2849 Fax