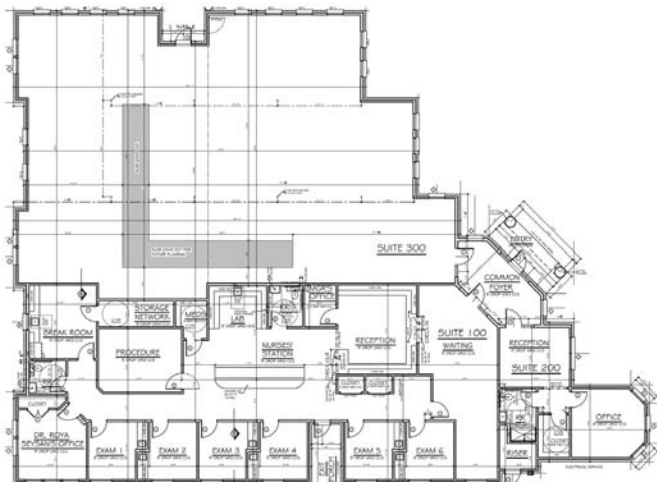




Office / Medical

SPACE for LEASE

2261 Olympia Dr - FM 1171 and Morris Rd, Flower Mound, TX 75028



3937 SF Available

- Divisible to 2000 SF +/-
- \$13 SF/year + \$7.00 NNN
- Generous Finish Out Allowance
- Southern Entrance to The River Walk at Central Park
- Ideal Uses: Medical or General Office
- 15 Minutes to D/FW Airport
- Great Visibility from FM 1171 & Morriss Rd.



2261 Olympia Drive
Flower Mound, TX 75028



for more information contact:

Todd Weaver
3505 Yucca Drive, Suite 100
Flower Mound, Texas 75028

todd@weavercommercial.com
469-635-2833 Office
469-635-2849 Fax