



Professional Office Suites For Sale \$525,000.00



Northwest corner of Main and Mill Street in revitalized downtown Lewisville

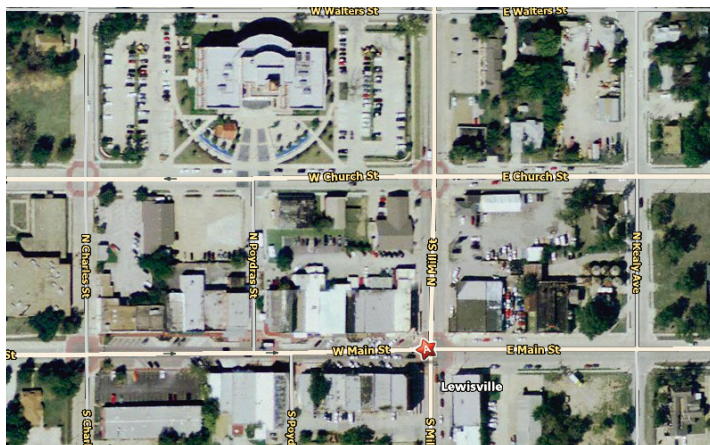
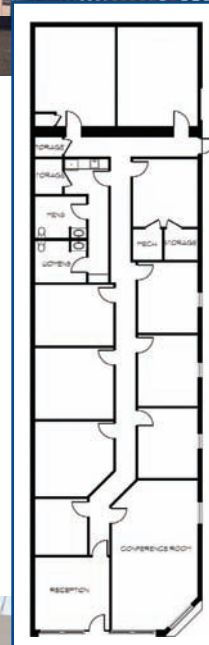
- 10 Offices w/ Reception Area
- Kitchen Area
- Each office Move-in Ready
- Conference Room
- 7 private parking spots
- Private Access 24/7

1/3 of mile from new DART Rail Station

Near Lewisville Cultural Center

Great Visibility

2 New Parking Areas Planned



101 W. Main Street Lewisville, TX 75067



for more information contact:

Todd Weaver
3505 Yucca Drive, Suite 100
Flower Mound, Texas 75028

todd@weavercommercial.com
469-635-2833 Office
469-635-2849 Fax