



For Sale

Location

Eads & FM 1171
Flower Mound, TX
75028

Land Area

2.251 Acres or 98,053 sq ft

Sales Price

\$1,951,266.00 or \$19.90 per sq/ft

Features

- Excellent "Direct Access" off of FM 1171 (Cross Timbers Rd.)
- Utilities to the site
- Zoned Retail-2
- Seller is updating the Zoning and is also Platting
- Great for Medical, Casual Dining

Contact

todd@weavercommercial.com
469-635-2833 Office
469-203-8552 Fax

WEAVER
COMMERCIAL REAL ESTATE





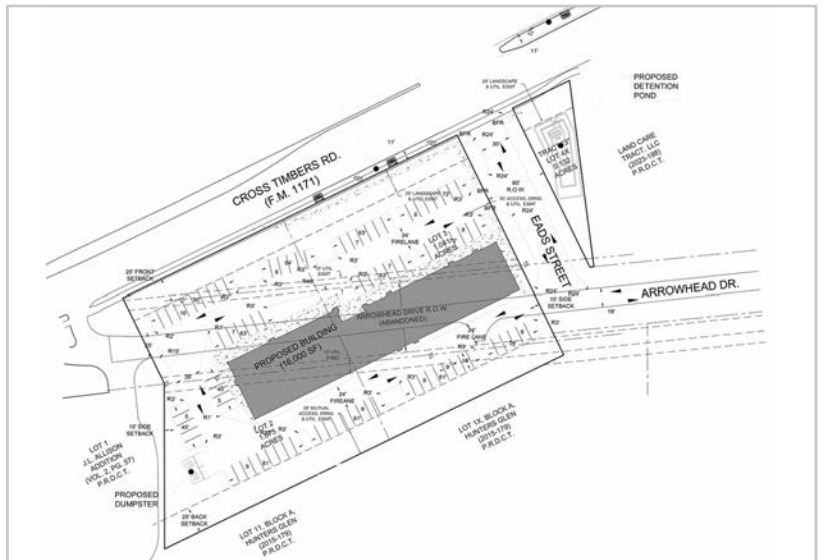
For Sale



Contact

todd@weavercommercial.com
469-635-2833 Office
469-635-2849 Fax

WEAVER
COMMERCIAL REAL ESTATE



This information is believed to be accurate, but no representation or warranty, express or implied, as to its accuracy or completeness is made by Weaver Commercial Real Estate, Ltd. and/or its agents or any party. The presentation of this property is submitted subject to errors, omissions, change of price and prior sale or lease, or withdrawal from market without notice.