



For Lease

Location

3041 Churchill Drive,
Flower Mound, TX 75028

Net Lease Space

4,000 sq/ft of second
generation space.

Price

\$14.16 psf Year One/Base Rent
\$5.75 Operating Expenses.

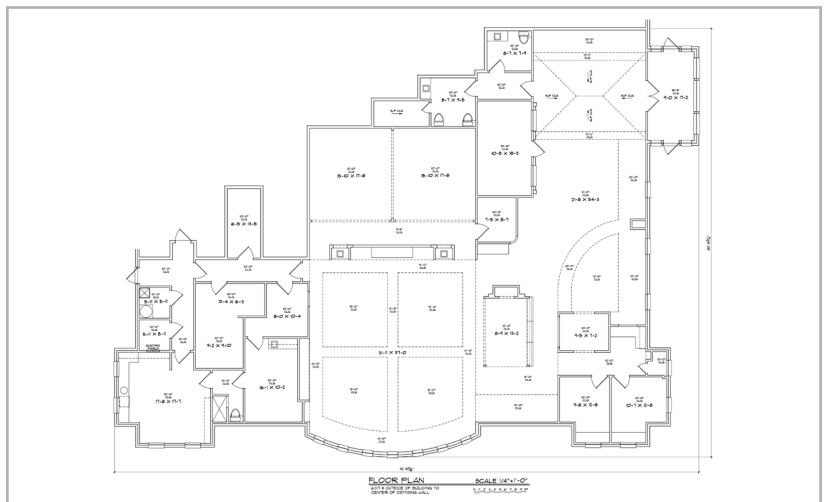
Features

- Located in Town Center on Churchill Drive across from Life-time Fitness and next to the Flower Mound Public Library.
- Office use



Contact

todd@weavercommercial.com
469-635-2833 Office
469-635-2849 Fax



This information is believed to be accurate, but no representation or warranty, express or implied, as to its accuracy or completeness is made by Weaver Commercial Real Estate, Ltd. and/or its agents or any party. The presentation of this property is submitted subject to errors, omissions, change of price and prior sale or lease, or withdrawal from market without notice.